



Implemented by



Supported and Developed by



Sponsored by



EcoCampus – Green Flag



WHAT IS FEE ECOCAMPUS?

A multi-level educational award program for primary, secondary and higher education. EHT serves as pilot TVET institution to set the new standard for other TVET in hospitality and tourism to adopt this program as it was not originally designed for TVET.

GREEN FLAG

EHT is the first TVET school worldwide, and the first school in Asia, to get the International Green Flag award by FEE, a recognition for positive environmental and social action in education.

KEY STRATEGIES

- Whole institution, all-inclusive, **student-led participatory approach**
- Action-oriented curriculum
- Quality and value-based sustainability education
- Involvement of teachers, staff, students, and communities

The 2 main axes



OPERATIONAL

Increase awareness by greening our school operations (Inspired by ISO 14000)

To keep in track of the **carbon footprint** the campus produces so we are doing the calculation of CO2 (electricity, gasoline & LPG) annually hence to not over produce of it. We started to do the **waste record** monthly by separated the recycle and non-recycle. We are increasing the planting area and to plant more veggies and make of use it in order to reduce buying it outside.



EDUCATIONAL

Empowering Environmental Stewardship & Green Curriculum

Our curriculum emphasizes environmental sustainability by **integrating greening initiatives** across all themes, continually refining to strengthen areas of need. Furthermore, we foster **ownership and leadership** in our students by appointing student leaders for each theme. These **leaders** are tasked with guiding and overseeing environmental projects, enhancing their leadership skills and fostering a sense of responsibility and independence in environmental stewardship.

ECO CAMPUS-ACTION PLAN

WHAT IS IT?

The Eco Campus Action Plan serves as the basis for all activities implemented within the program. It represents an annual strategy for environmental improvement based on yearly assessments. It sets targets using the previous year's results as a baseline and assigns clear responsibilities for achieving these goals. The plan covers 8 green themes, each managed by a dedicated team.

THE ACTION PLAN IS STRUCTURED TO:



RECORD CURRENT
ACHIEVEMENTS



DEFINE
TARGETS



PROPOSE ACTIONS
TO REACH TARGETS



REVIEWING
PROGRESS

8 THEMES



BIODIVERSITY



EQUITY & EQUALITY



FOOD & SUPPLY
CHAIN



HEALTH &
WELLBEING



POLLUTION
& CLIMATE
CHANGE



RESOURCE
CONSUMPTION



WASTE
MANAGEMENT



EDUCATION &
COMMUNICATION

Measure the impact



OPERATIONAL

Data & Action Plan

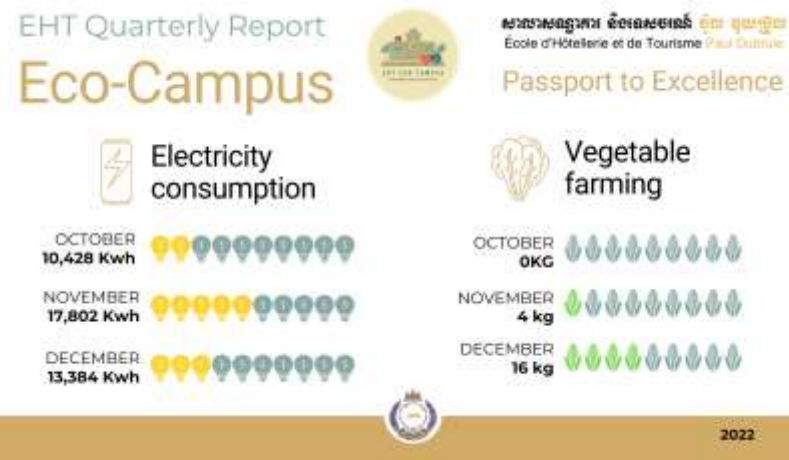
- Action plan with yearly objectives on 8 areas
- Carbon footprint calculation
- Electricity consumption
- Waste consumption
- Farming production
- Green areas measures
- Counting biodiversity (plants, animals)
- Vegetarian meals



EDUCATIONAL

Inclusive Leadership

- Inclusion
- Mindset change
- Sharing & increasing knowledge
- Give technical skills to make become leader in the domain



Go the extra-mile

- ✓ Tackling stereotypes and discrimination beyond the classroom.
- ✓ Hosting guest speakers on women's entrepreneurship.
- ✓ Establishing a mental health committee for comprehensive support.



FOLLOW US - @ecolepauldubrule



VISIT US

[ECOLEPAULDUBRULE.ORG](http://ecolepauldubrule.org)

École d'Hôtellerie et de Tourisme Paul Dubrule
National Road 6, Siem Reap-Angkor, Cambodia
+855 (0)63 963 672 | +855 (0)95 219 994
info@ecolepauldubrule.org